

# Preparing Digital Images for Projection in Photoshop

# Key Points:

## Technical

- images must be in jpeg format
- images should have a sRGB colour space
- images must be no larger than 1400 x 1050

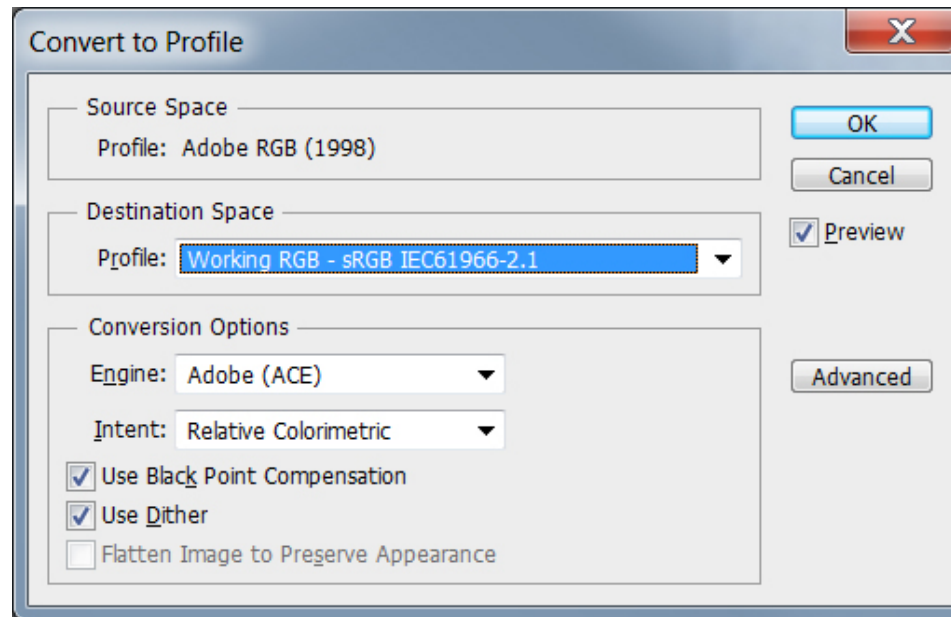
Note that if images are not exactly 1400 x 1050 they no longer need to be 'filled out' with a 'canvas' BUT one of the dimensions must be exact ... i.e. either 1400 wide OR 1050 tall. The DiCentra software will fill in a black canvas if one of the dimensions is not 1400 or 1050.



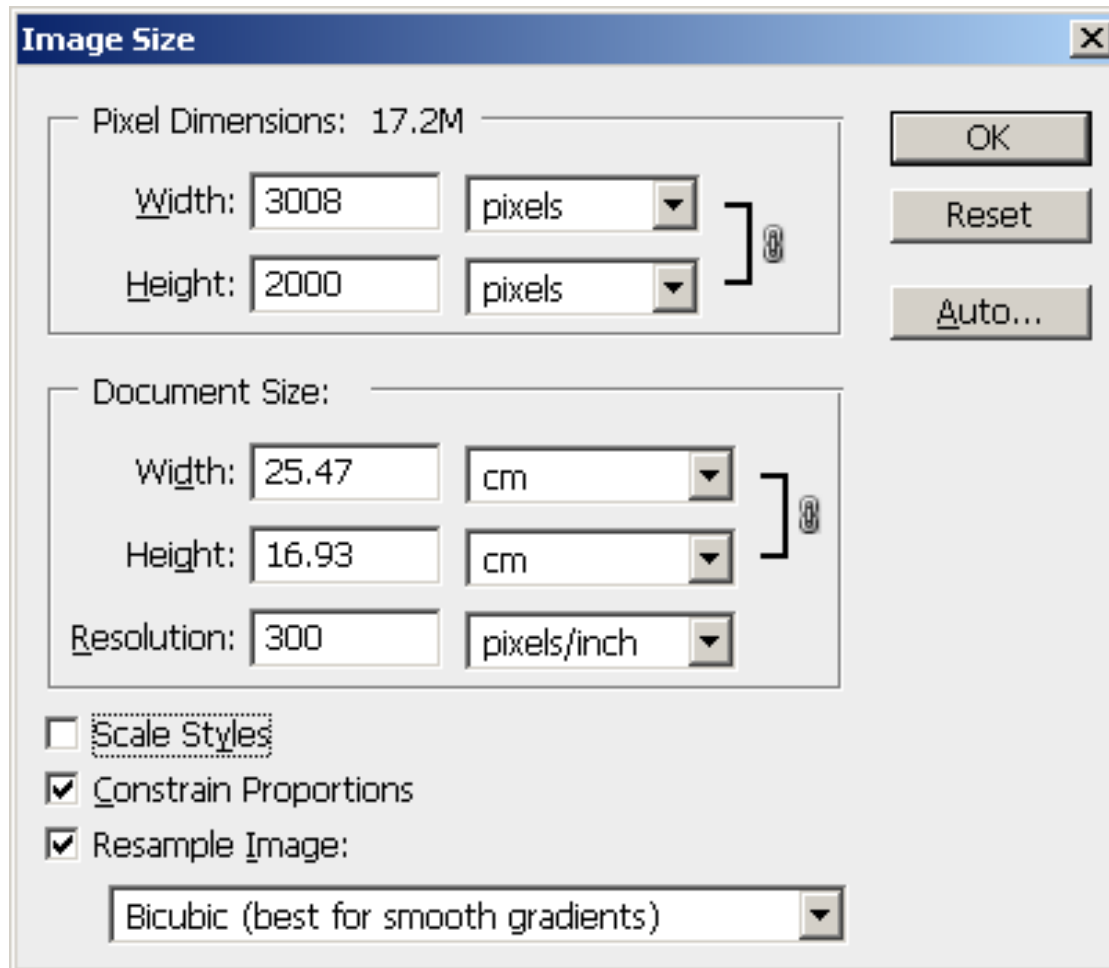
using an image which is 3008 x 2000 pixels and Adobe RGB colour space

Ensure that the colour space is sRGB

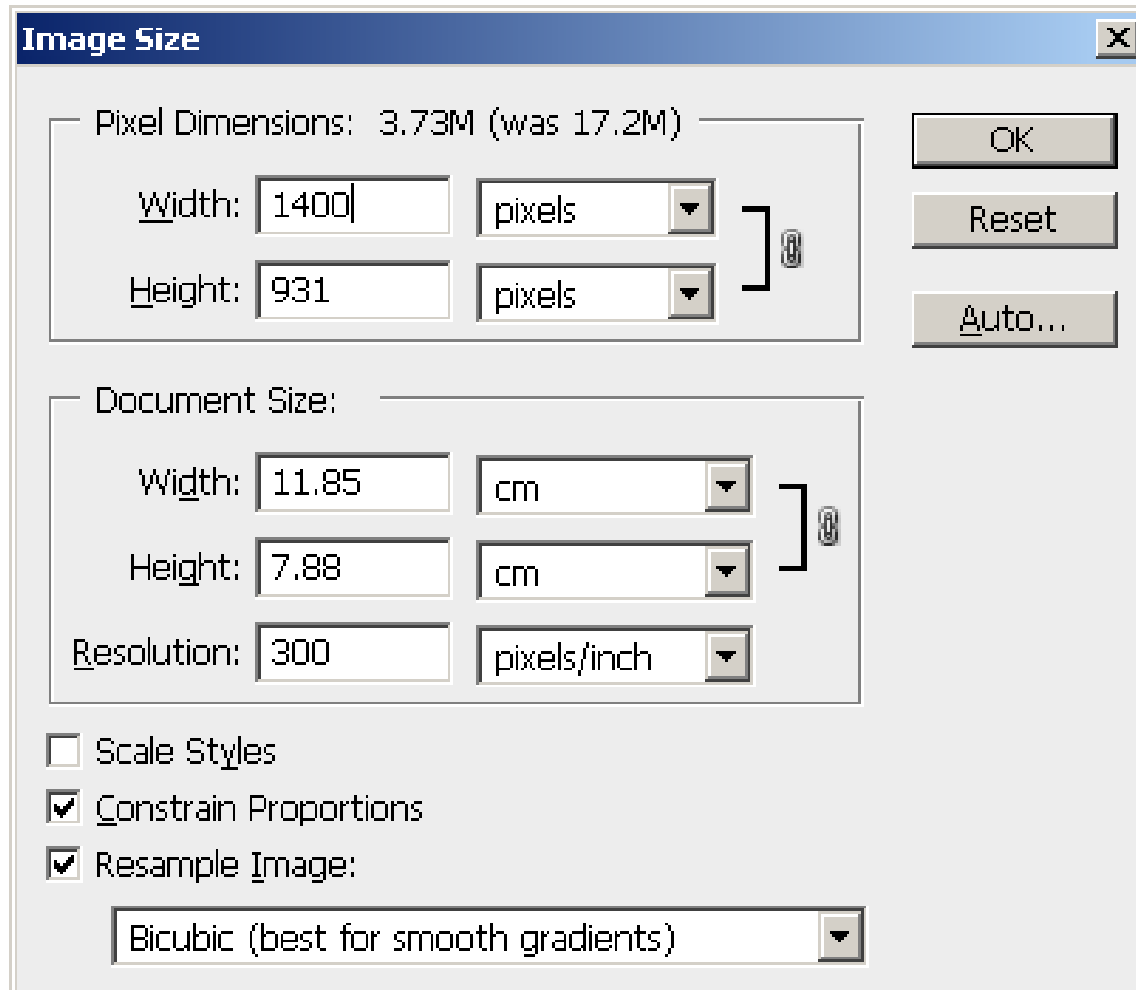
Edit/ Convert to Profile



## 'Image/ Image size'

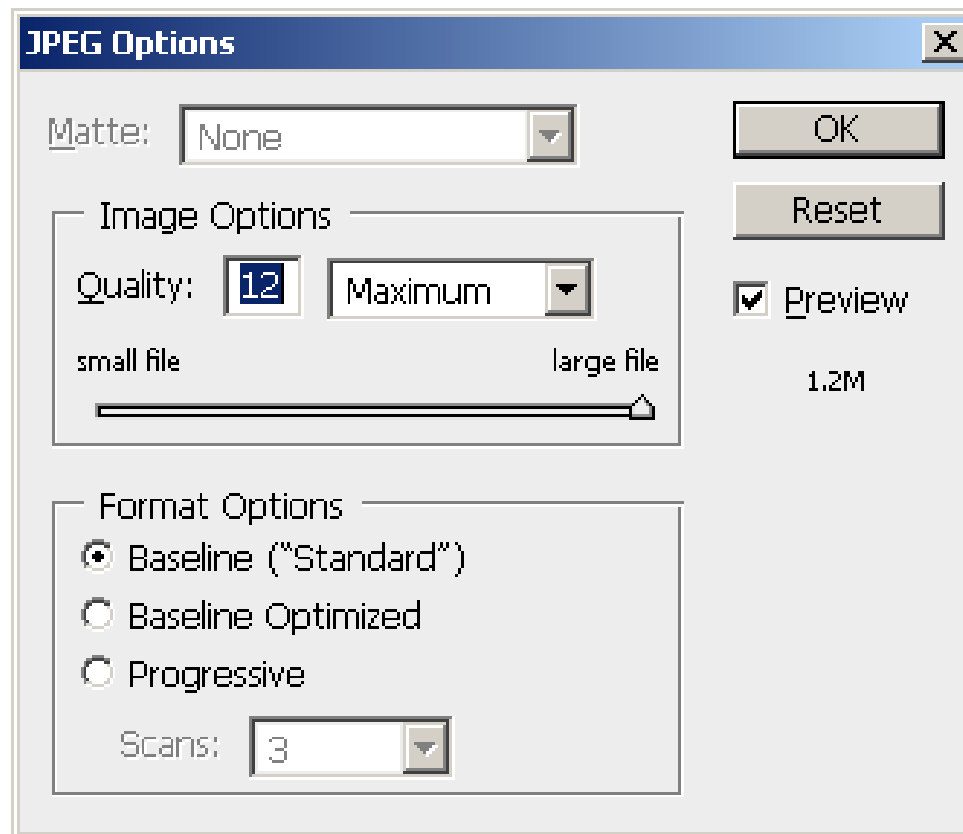


set the width to 1400 (the height will change automatically with the constrain proportions option set)





save the file as a jpeg file following the file naming conventions



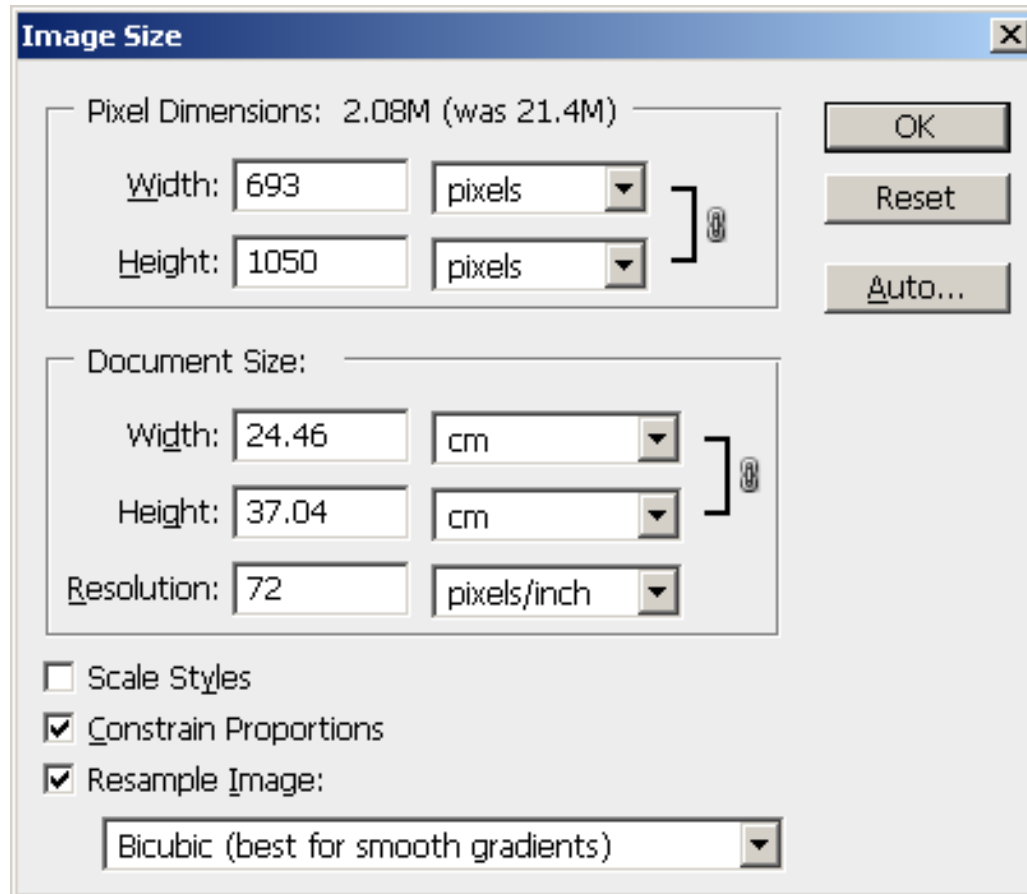




using an image which is 2224 x 3368 pixels

Change the colour space to sRGB if necessary

set the height to 1050 (the width will change automatically with the constrain proportions option set)



save the file as a jpeg file following the file naming conventions

